

Seasonal Assessment – Summer 2024

First two months – June and July 2024

The following represents a provisional assessment of the weather experienced across the UK during the first two months of Summer 2024 (June and July) and how it compares with the 1991 to 2020 average.

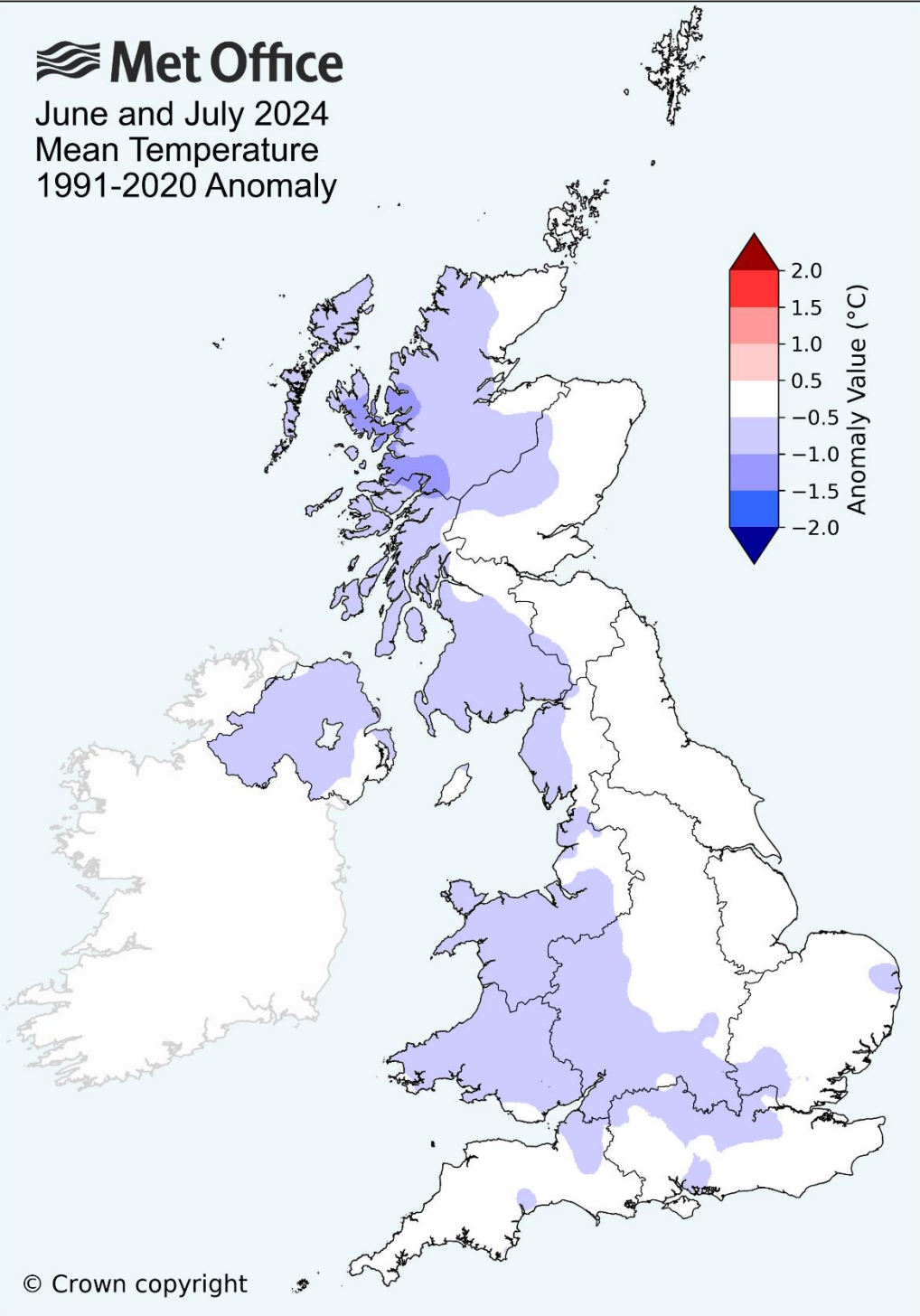
In a cool start to summer, mean temperatures in both June and July were below average across the UK, largely due to northerly winds bringing cold Arctic air. June started off cooler than average, with temperatures around 2°C below the long-term average in most areas, and although there was a warm spell in the third week of the month this was short-lived. Scattered showers brought some rain in June, but overall accumulations were below average. Only some areas of Scotland saw more than the average June rainfall. July followed a similar path, with cooler than average temperatures at the start of the month followed by a more substantial warm spell. Warmer temperatures closed out July, and some areas of the southeast reached 30°C. The start of July was wet for many, with areas of southern and northeastern England receiving more than the average July rainfall in the first half of the month. Much of the UK saw sun during the warm spell in the second half of the month, although scattered showers, some heavy, were still present. Thunderstorms closed out the month with occasionally heavy downpours on the 30th causing some localised flooding.

Temperatures in June were below average across the UK, with a mean of 12.9°C, 0.4°C below the long-term average. The cold start to the month was balanced by the warm spell in the second half. July was similar, with a mean temperature of 14.8°C for the UK, 0.5°C below the long-term average. However, large parts of the south, in particular the southeast, experienced a small heat wave in the final weeks of July, with Heathrow and Kew Gardens recording the highest temperature of the year so far on 30 July with 32.0°C. Rainfall in June was below average across the country, with the UK recording just 55.4mm of rainfall (72% of the long-term average). July was wetter, especially in southern England, which recorded 129% of their long-term average July rainfall. The UK recorded 82.4mm of rainfall in July, 100% of the average. Sunshine levels were average for June (178.3 hours, or 104% of the average for the UK), but below average in July (153.7 hours, 89% of the average for the UK).

UK statistical summary		
Mean temperature	Rainfall	Sunshine
The provisional mean value for June and July is 13.9°C, which is 0.5°C below the 1991-2020 average.	The provisional total for June and July is 137.8 mm, which is 86.3% of the 1991-2020 average.	The provisional total for June and July is 332.0 hours, which is 96.2% of the 1991-2020 average.



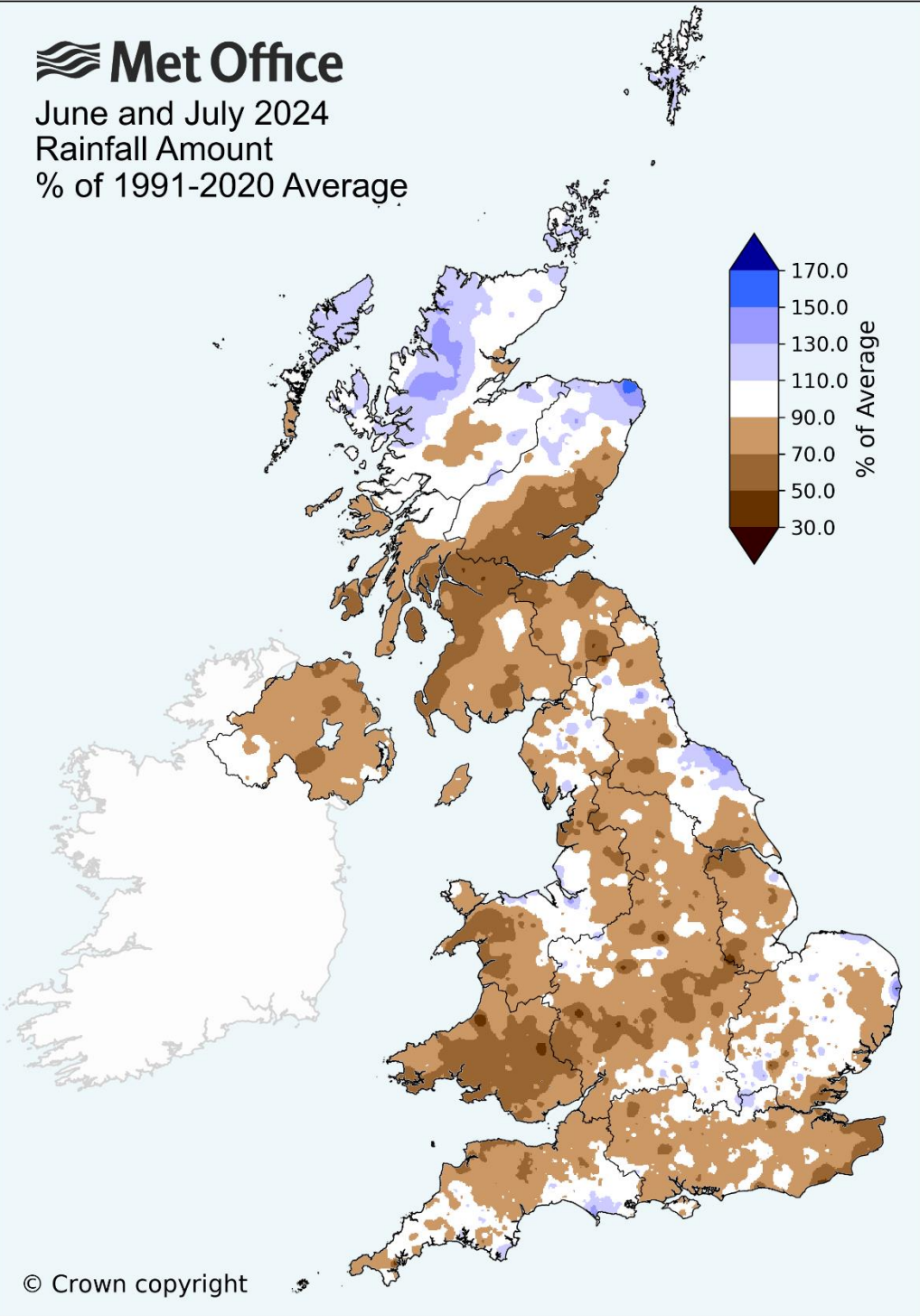
June and July 2024
Mean Temperature
1991-2020 Anomaly



© Crown copyright

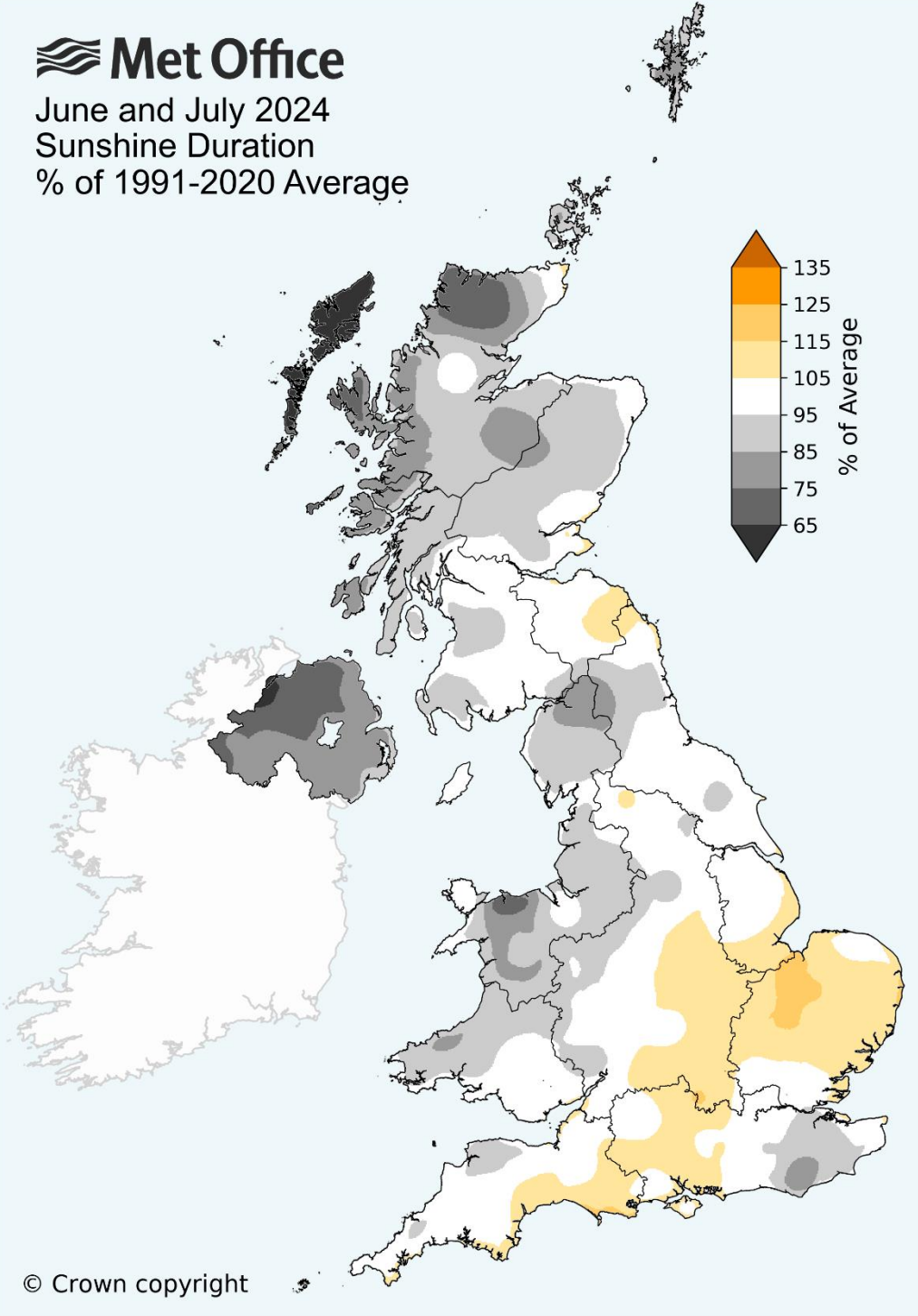


June and July 2024
Rainfall Amount
% of 1991-2020 Average



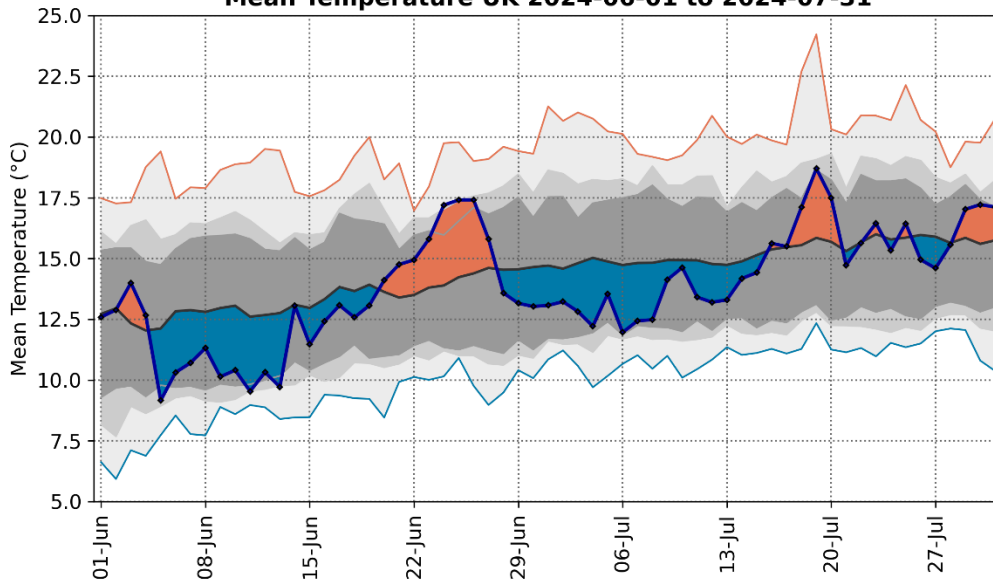


June and July 2024
Sunshine Duration
% of 1991-2020 Average



© Crown copyright

Mean Temperature UK 2024-06-01 to 2024-07-31



— 1991-2020 — lowest — 5% — 10% — 90% — 95% — highest — actual