

Storm Lilian, 23 August 2024

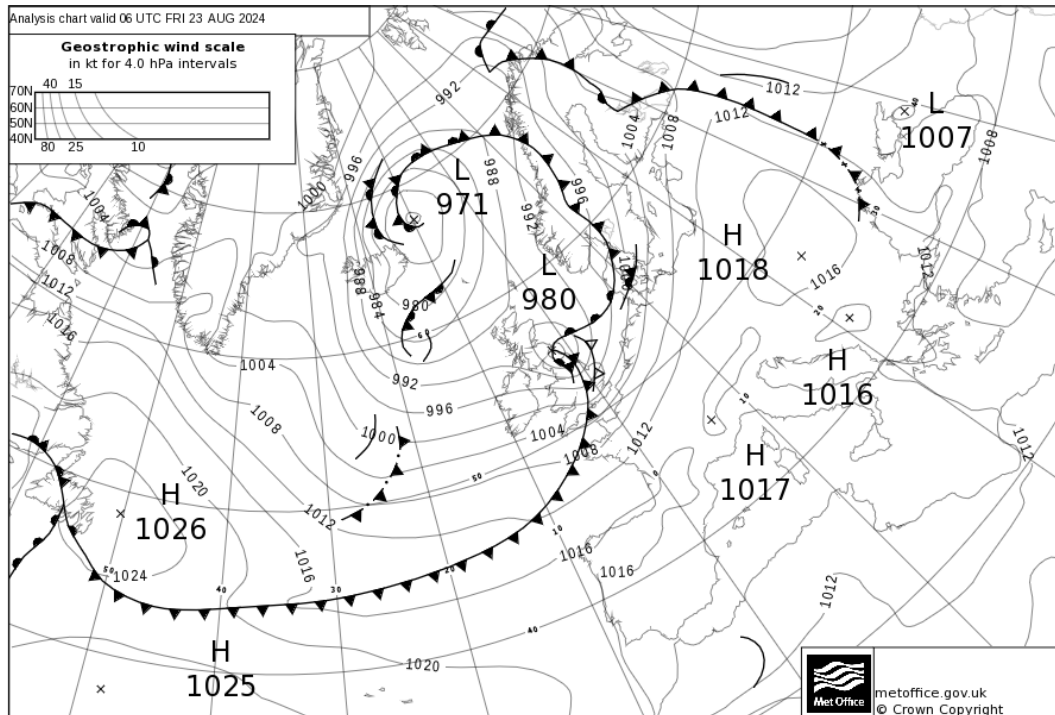
Storm Lilian was the 12th and final named storm of the 2023-2024 storm season, the first time 'L' has been reached making this the most named storms in a season since the scheme was introduced in 2015. Lilian was the most significant August windstorm to affect the UK since storms Ellen and Francis in late August 2020, bringing strong winds and heavy rain to northern England and Wales, and parts of Scotland.

Impacts

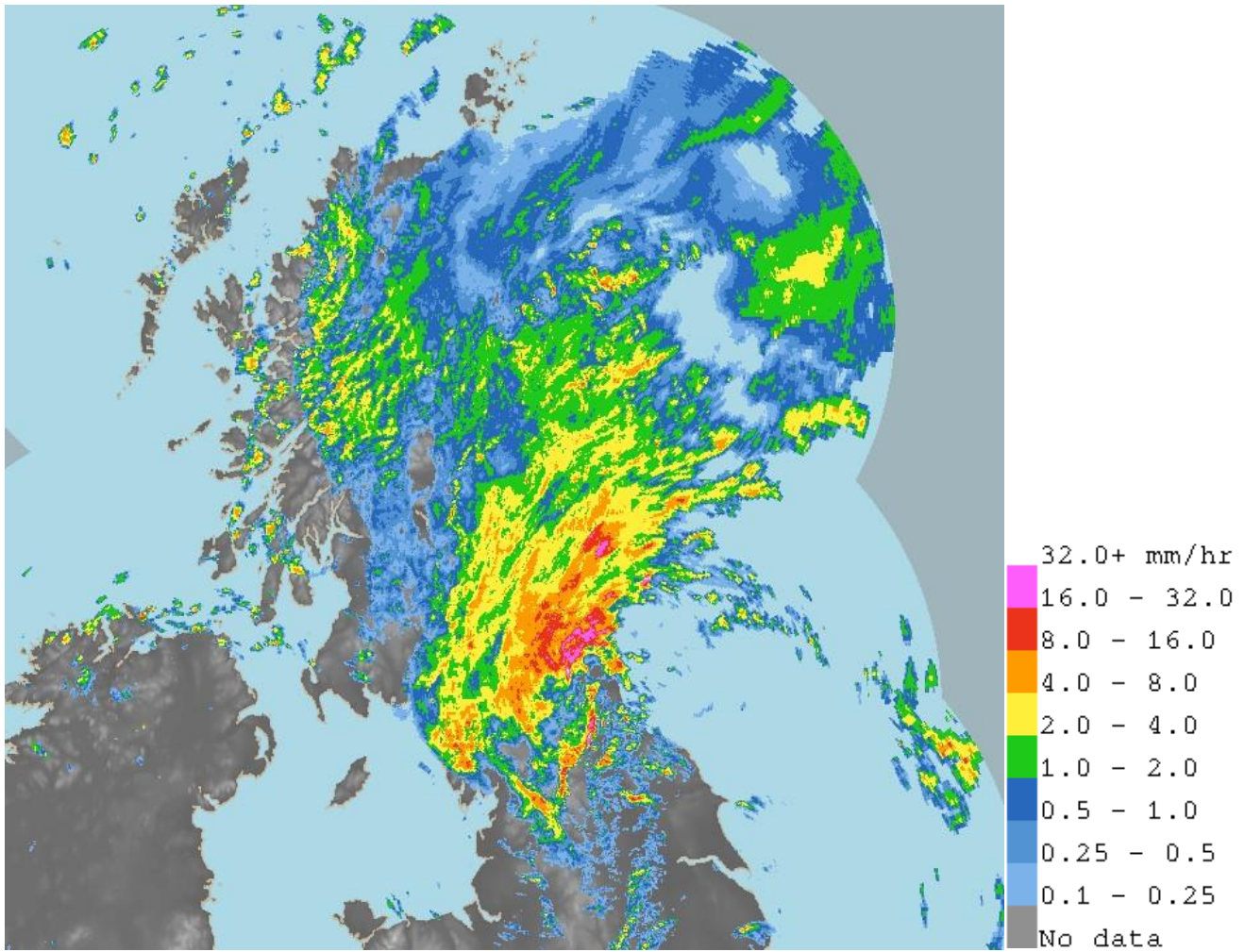
Storm Lilian brought travel disruption to parts of the UK on Friday, ahead of the bank holiday weekend. Tens of thousands of homes experienced power cuts. Three stages at the Leeds Festival were closed due to strong winds and tents were damaged, while the Creamfields music festival in Cheshire was also delayed. A number of flights at Heathrow were cancelled and the M48 Severn ridge in Gloucestershire was temporarily closed.

Weather data

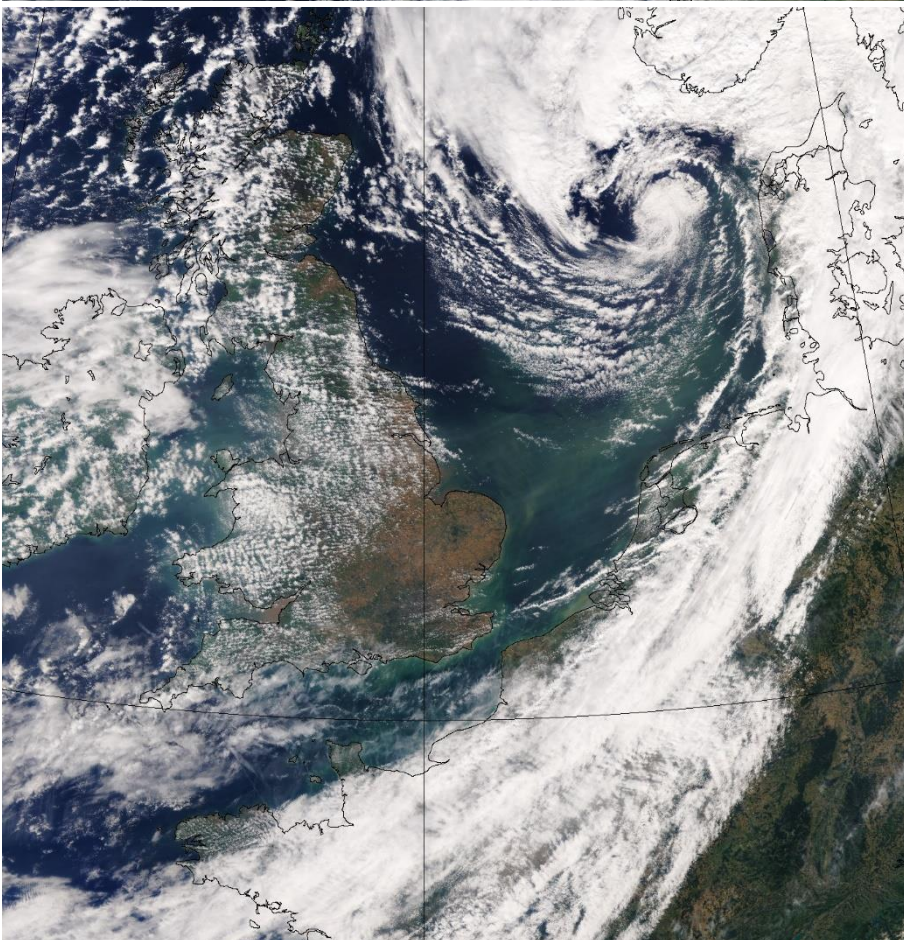
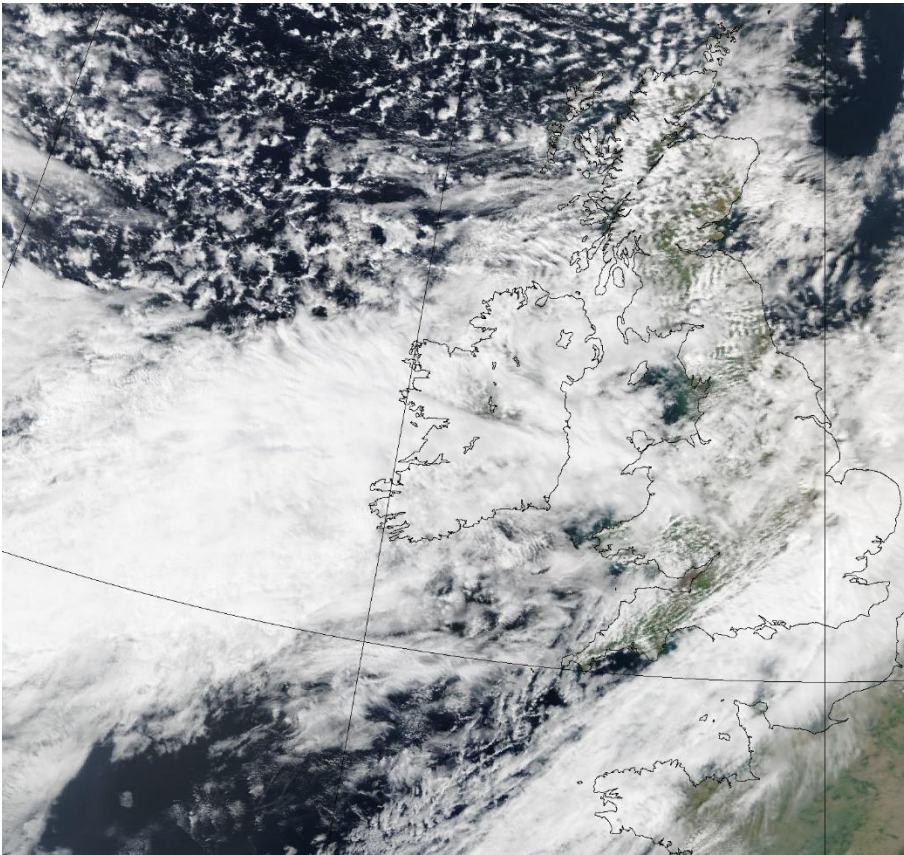
The analysis chart at 0600UTC 23 August 2024 shows storm Lilian tracking north-east across northern England.



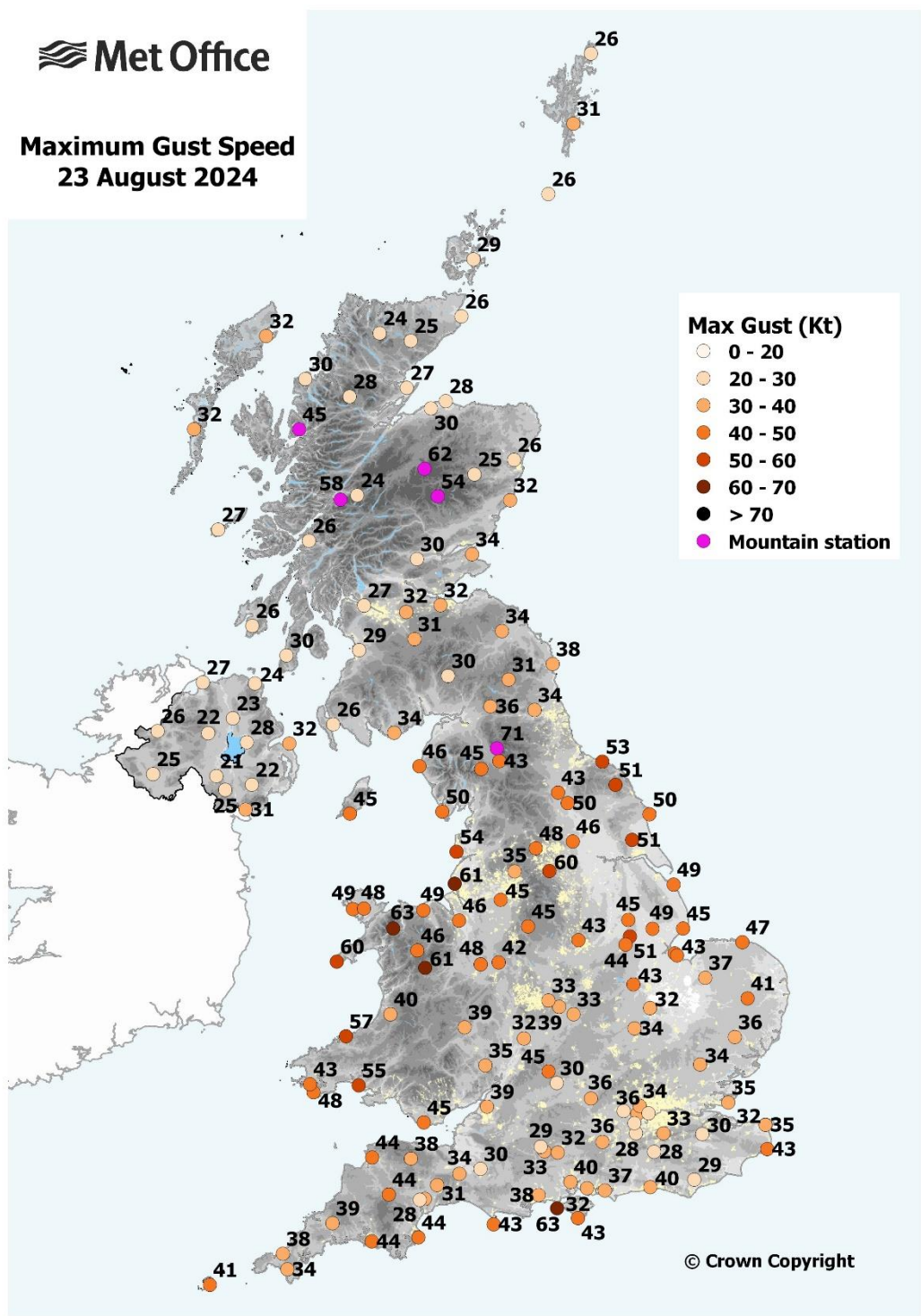
The rain-radar image at 0600UTC 23 August 2024 shows the associated area of heavy rain from the storm.



The satellite images show storm Lilian approaching to the south-west of Ireland on 22 August (top) and clearing into the North Sea on 23 August 2024 (bottom). Images copyright Met Office / NOAA / NASA.



The map below shows maximum gust speeds across the UK on 23 August 2024, with the strongest winds of 50 to 60Kt (58 to 69mph) in a swathe across Wales and northern England. In terms of widespread gusts exceeding 50Kt, this was the most notable August storm to affect the UK since storms Ellen and Francis in late August 2020. Storms Antoni and Betty also affected the UK in August 2023 but were not especially severe for the time of year.



Author: Mike Kendon, Met Office National Climate Information Centre

Last updated 06/09/2024

