



TAF performance

Summary - October 2024

TAF Verification using the Gerrity Skill Score

Since 2005 the TAF verification scheme used by the Met Office has been based on a Service Quality Index (SQI). The SQI has served the Met Office well, however from April 2020 a new verification scheme has been endorsed by the CAA and adopted by the Met Office. This scheme is based on a statistical measure called the Gerrity Skill Score (GSS).

What is the Gerrity Skill Score (GSS)?

The GSS is a measure of forecast discrimination. This means that it assesses whether a TAF category that was forecast actually occurred. For example, a good score for the highest visibility category is obtained if it regularly occurred whenever it was forecast, but rarely occurred when it was not forecast.

The GSS answers the question "What was the accuracy of the forecast at predicting the correct category, relative to that of random chance?" and ranges from -1 to 1, with 0 indicating no skill and 1 indicating that every occurring category has been correctly predicted. The GSS gives a greater reward to meteorologists who "stick their neck out" in an attempt to correctly predict rare events, rather than those who adopt a more conservative approach.

Unlike the SQI more than one category threshold is used by the GSS (see table 1). The Met Office assess all the TAF cloud base and visibility categories defined by ICAO. At the time of writing, the following categories are used for TAF assessment:

Surface visibility	Cloud base
10km or more	1500ft or more
5000m to 9999m	1000ft to 1499ft
1500m to 4999m	500ft to 999ft
800m to 1499m	201ft to 499ft
350m to 799m	200ft or less
349m or less	

Table 1 - Categories used in TAF verification

An assessment of forecast accuracy

The GSS does not only consider whether the observed category has been forecast correctly, it also considers the magnitude of any forecast error. Categories that often occur, and should therefore be easier to forecast, are harshly penalised by the GSS if they are incorrectly predicted. On the other hand, categories that rarely occur, and are therefore difficult to forecast correctly, are only penalised less if they are incorrectly predicted (if the event is particularly rare, a small forecast error can lead to a small reward).

A GSS of 0.5 indicates that, over the 3-year period of analysis, the issued TAFs were twice as accurate as random forecasts that have been based on how frequently each category was observed. In a Gerrity Score analysis of accuracy, greater credit is given to correct (and almost correct) forecasts of rare events and less credit is awarded to correct forecasts of common events.

Effects of climatology

The GSS can be sensitive to changes in the climatology. If a very rare event is correctly predicted it will provide a large boost to the score. However, when that event "drops out" of the rolling 3-year calculation the score may suddenly seem to drop if no similar extreme has been correctly predicted in the meantime.

Improved interpretations of TAF change groups

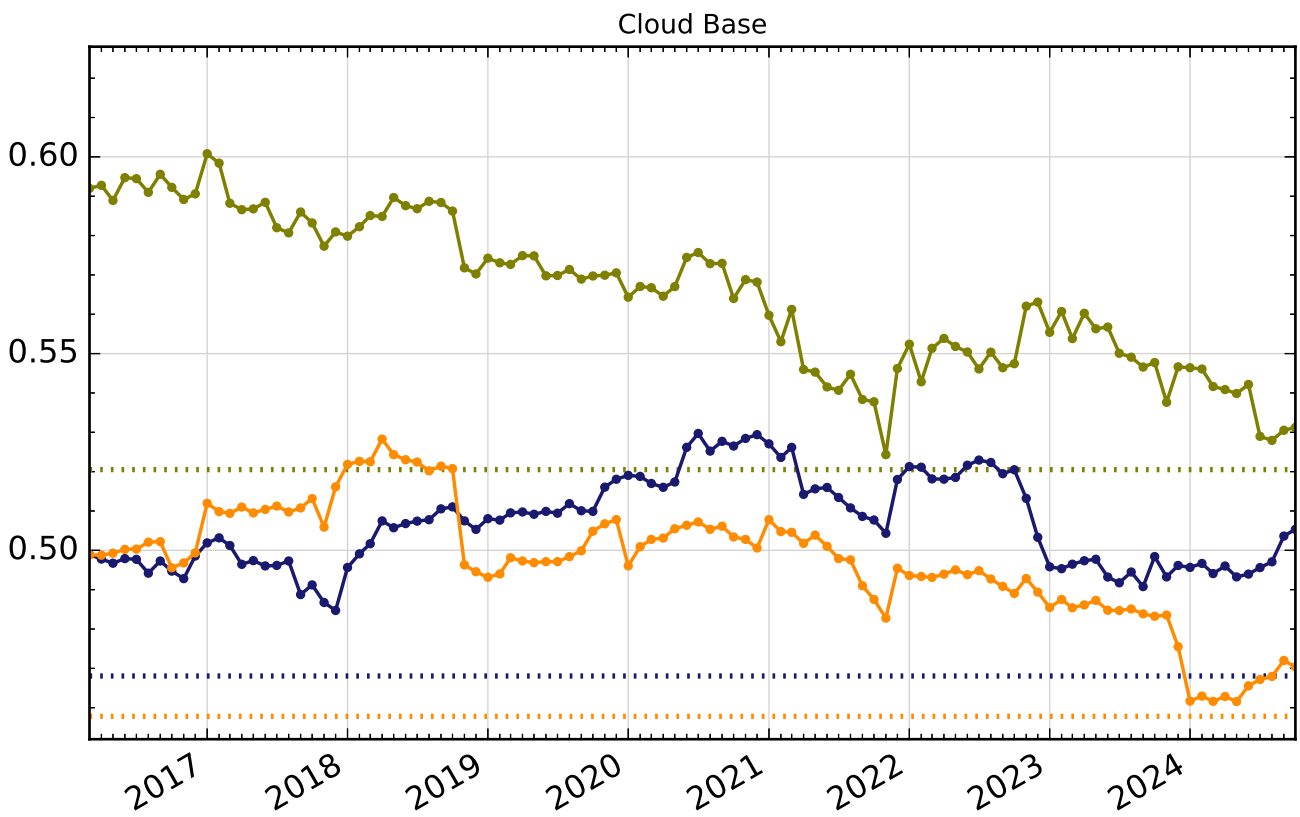
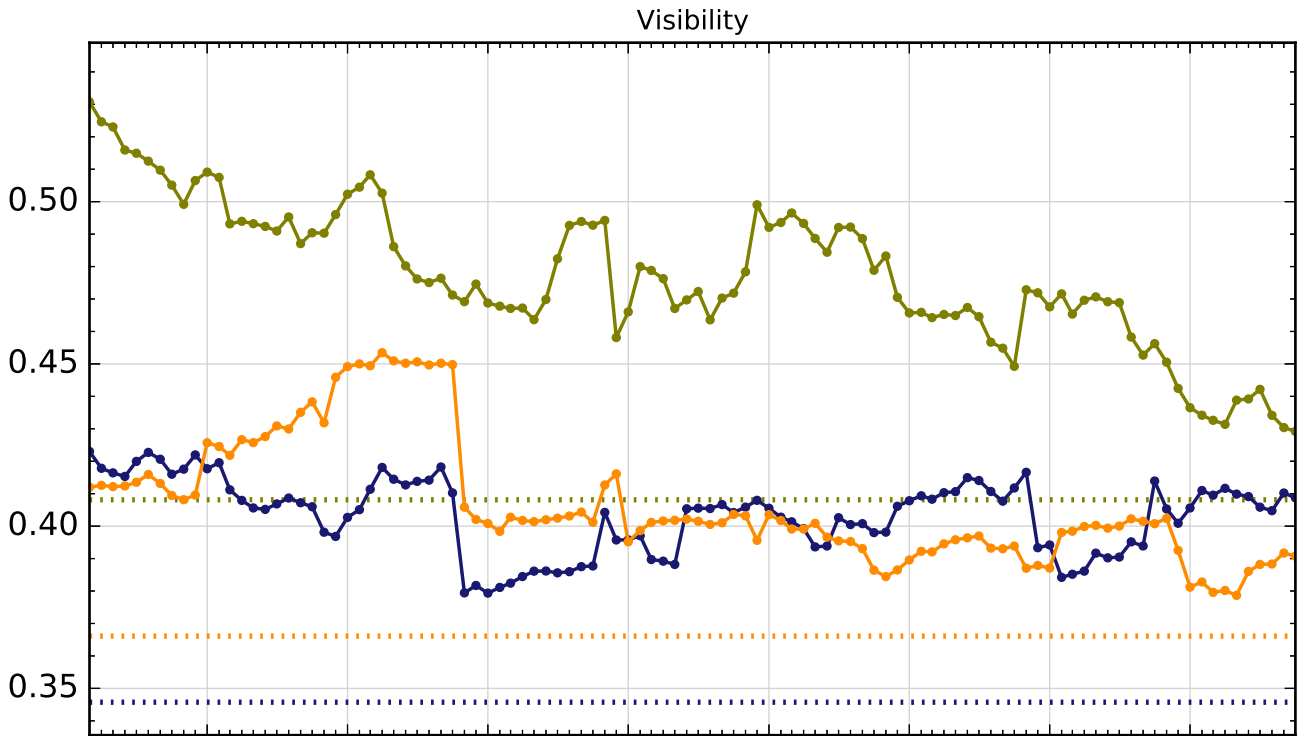
The new verification scheme has tried to improve on the TAF term interpretations adopted by the SQI approach. The new interpretations used to assess each TAF term are based on the definitions within ICAO documentation, namely:

- TEMPO: the alternative category should occur at least once and up to half the time
- BECMG: a transition period when the alternative category should occur at least once
- PROB30/40: the alternative category is forecast with a probability of 30% / 40% at each METAR time
- PROB30/40 TEMPO: the alternative category is forecast with a probability of 30% / 40% at least once and for up to half the time

Airports used in verification

ICAO	Name	Duration	Region
EGAC	Belfast City	9 hr	North
EGAE	Derry/Londonderry	9 hr	North
EGNV	Durham Teesside	9 hr	North
EGPA	Kirkwall	9 hr	North
EGPB	Sumburgh	9 hr	North
EGPE	Inverness	9 hr	North
EGPO	Stornoway	9 hr	North
EGHH	Bournemouth	9 hr	South
EGHI	Southampton	9 hr	South
EGHQ	Newquay	9 hr	South
EGLC	London City	9 hr	South
EGMC	Southend	9 hr	South
EGNJ	Humberside	9 hr	South
EGSH	Norwick	9 hr	South
EGTE	Exeter	9 hr	South
EGAA	Belfast International	24 hr	North
EGNM	Leeds Bradford	24 hr	North
EGNT	Newcastle	24 hr	North
EGPD	Aberdeen	24 hr	North
EGPF	Glasgow	24 hr	North
EGPH	Edinburgh	24 hr	North
EGPK	Prestwick	24 hr	North
EGBB	Birmingham	24 hr	South
EGCN	Doncaster Sheffield	24 hr	South
EGGD	Bristol	24 hr	South
EGGW	London Luton	24 hr	South
EGFF	Cardiff	24 hr	South
EGGP	Liverpool	24 hr	South
EGNX	East Midlands	24 hr	South
EGCC	Manchester	30 hr	South
EGKK	London Gatwick	30 hr	South
EGLL	London Heathrow	30 hr	South
EGSS	London Stansted	30 hr	South

Gerrity Skill Score Rolling 36-month calculation



Generated November 2024 for October 2024 results

© Crown copyright 2024

Met Office	Tel: 0370 900 0100
FitzRoy Road, Exeter	Fax: 0370 900 5050
Devon EX1 3PB	enquiries@metoffice.gov.uk
United Kingdom	www.metoffice.gov.uk