

Storm Debi, 13 November 2023

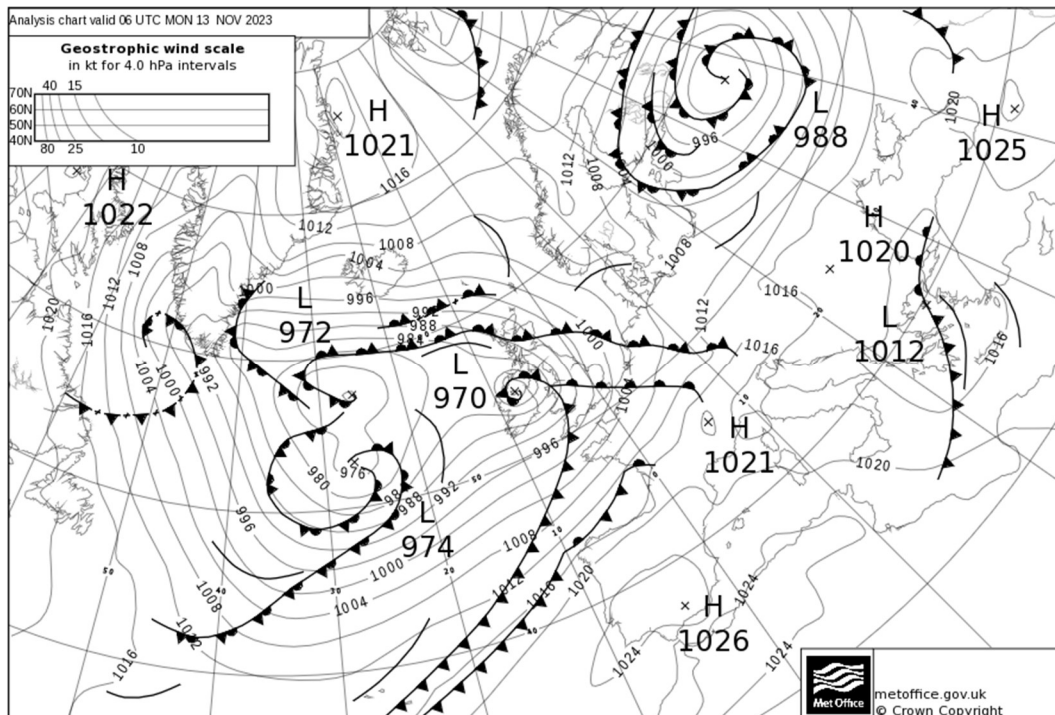
Storm Debi, named by the Irish National Met Service, Met Éireann, brought strong winds and heavy rain to the UK on 13 November with parts of Northern Ireland, south-west Scotland, north-west England and North Wales worst affected. The strongest winds were around Irish Sea coasts with gusts in exposed locations exceeding 60Kt (69mph). In addition to the strong winds, storm Debi and associated fronts brought a further spell of very wet weather with 30 to 50mm of rain falling widely and over 100mm across upland areas of north-west England. This was a notable, but not exceptional, autumn storm for the UK, but as the fourth named storm of the 2023-2024 storm season, contributed to a generally wet, stormy and unsettled spell of weather affecting the UK through the autumn.

Impacts

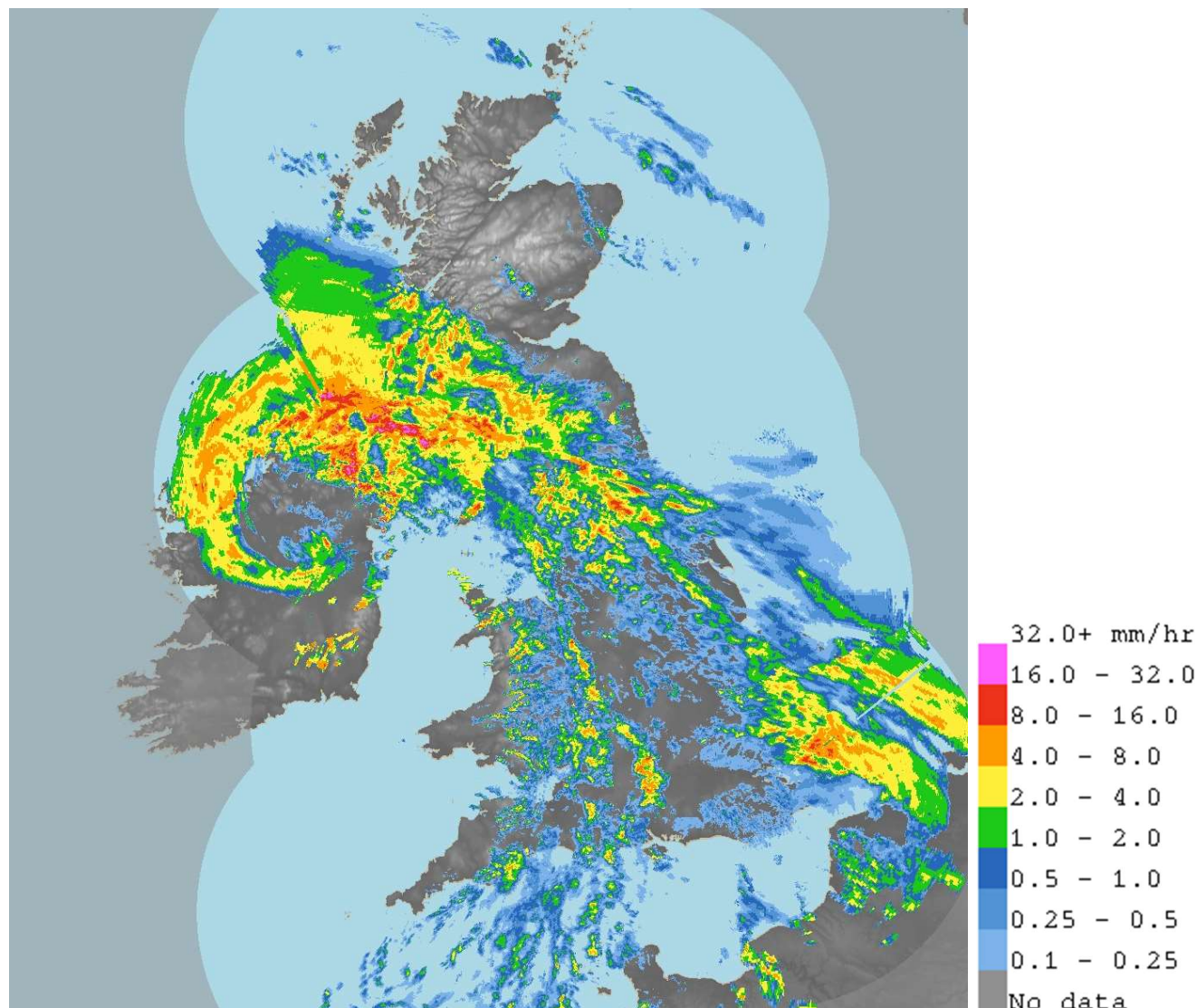
The worst weather impacts from storm Debi were across the Republic of Ireland where a red weather warning was issued, and 100,000 homes and businesses lost power. In the UK, there was some localized transport disruption with some road closures and disruption to rail, air and ferry services. Flights were cancelled at several airports, including at least 50 flights to and from London Heathrow, while a number of fallen trees resulted in rail cancellations. Large waves battered Irish Sea coasts. This storm brought further heavy rain and strong winds to parts of Northern Ireland which was still recovering from flooding following earlier wet weather.

Weather data

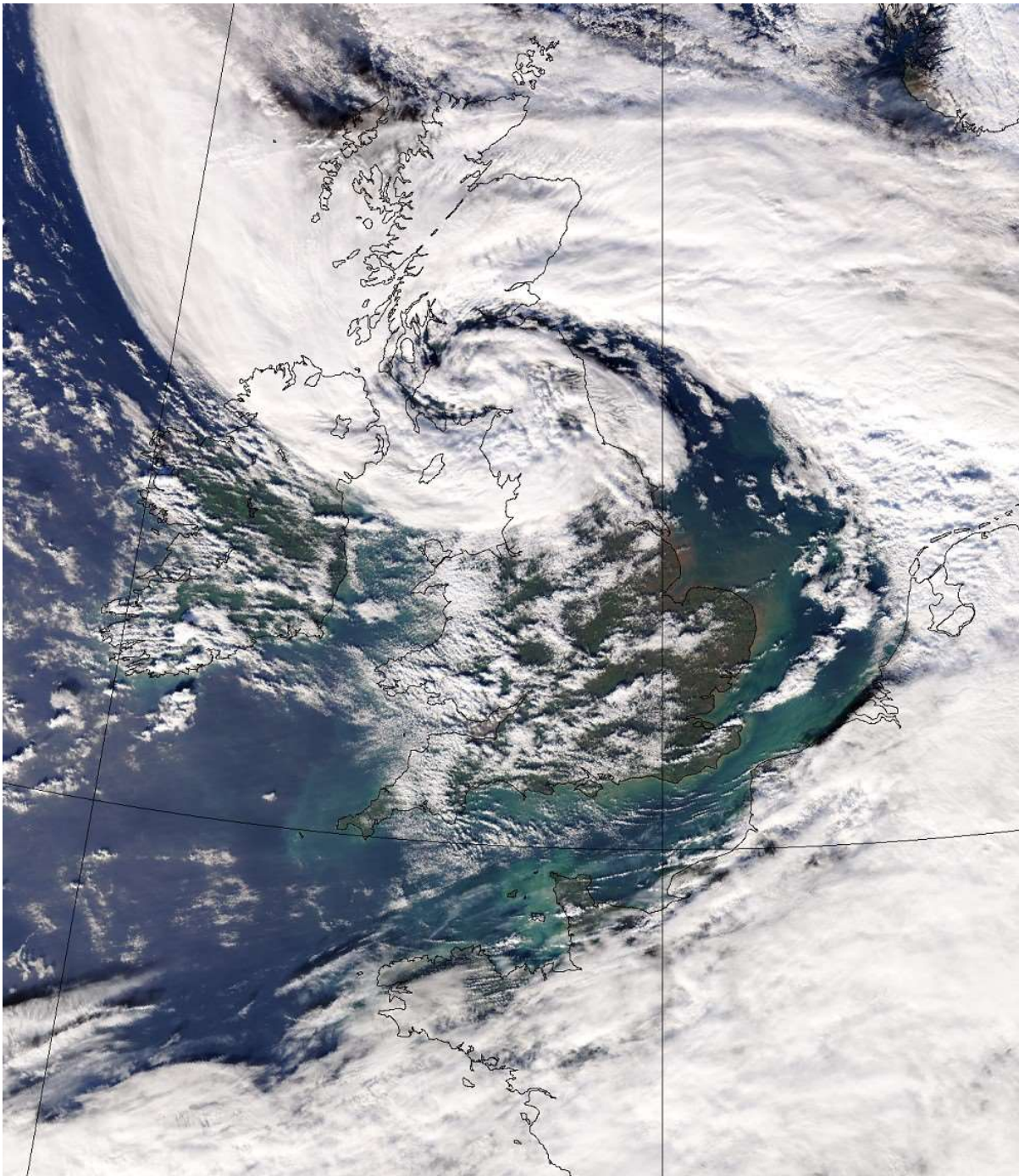
The analysis chart at 0600UTC 13 November 2023 shows storm Debi, with the low pressure centre over Northern Ireland.



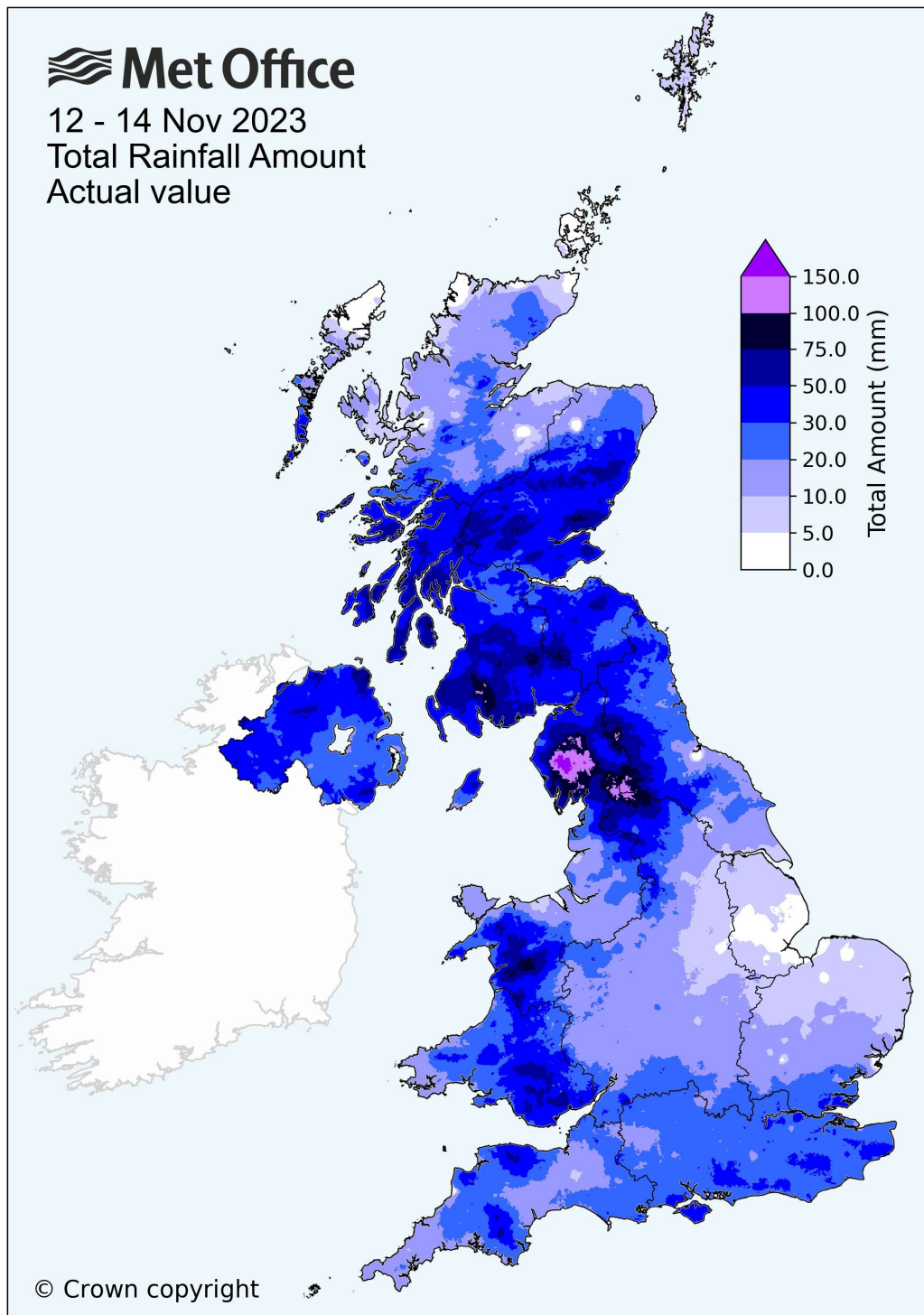
The rain-radar image at 0600UTC 13 November 2023 shows heavy rain from storm Debi across Northern Ireland, south-west Scotland and north-west England. An occluded front across Northern Ireland is wrapped around the low pressure centre, with a warm front stretching south-east toward Kent, a cold front south stretched towards Cornwall and the 'warm sector' in between.



The satellite image at 1227UTC 13 November 2023 – 6 hours later – shows the centre of storm Debi over south-west Scotland, with associated fronts stretching across the North Sea and over the near continent, and clear skies behind the back edge of the cold front. Images copyright Met Office / NOAA / NASA.

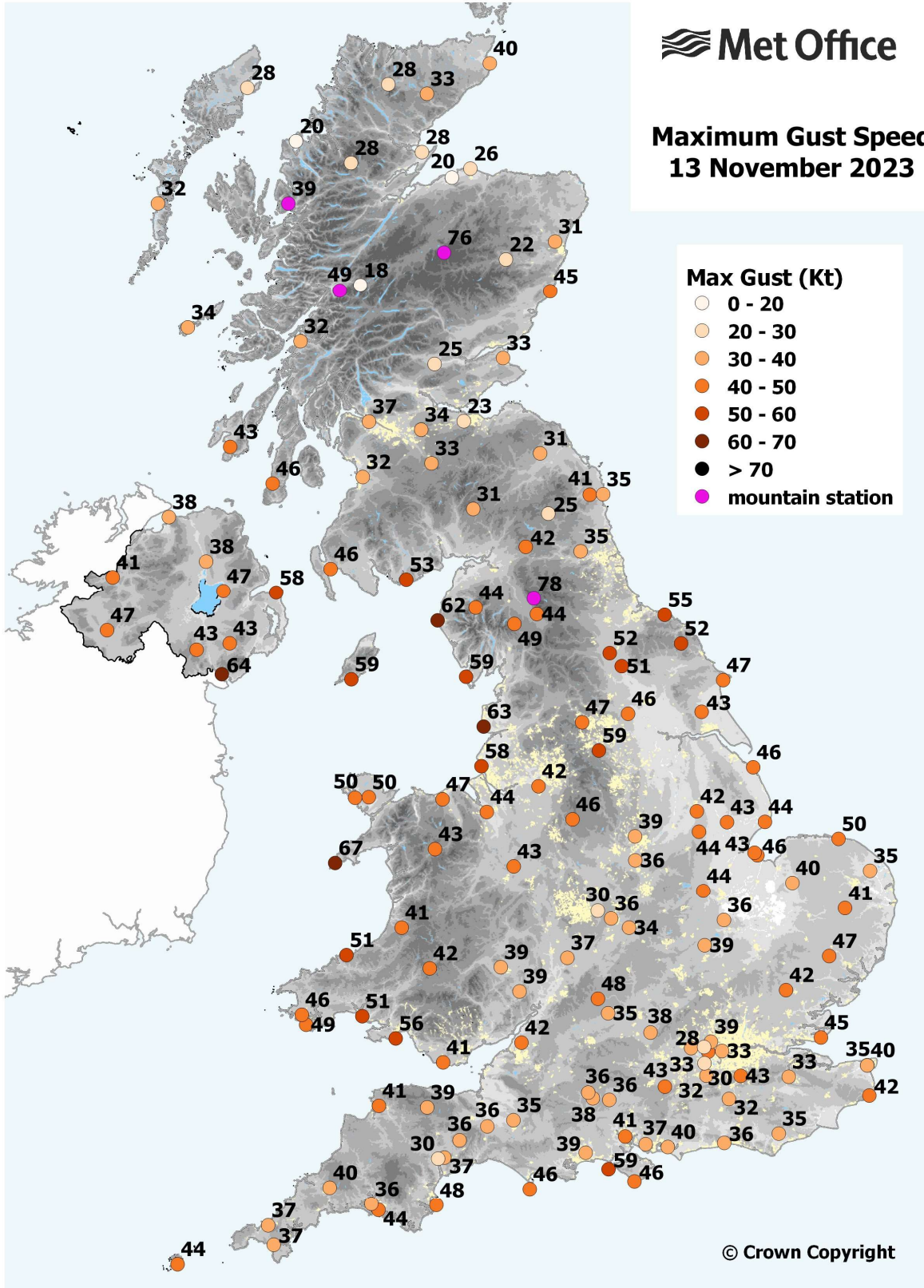


The map below shows rainfall accumulations from 12 to 14 November 2023, with 30 to 50mm falling widely across many parts of the UK, over 50mm across upland areas of Wales, north-west England and south-west Scotland and the wettest areas – particularly the Lake District fells – receiving over 100mm – for example 209.0mm at Honister Pass, 178.8mm at Seathwaite (Borrowdale) and 176.4mm at Mickleden, Middlefell Farm (Langdale).



The chart below shows maximum gust speeds recorded across the UK, with the highest gusts recorded around Irish Sea coasts: 67Kt (77mph) at Aberdaron (Gwynedd), 64Kt (74mph) at Killowen (County Down), 63Kt (72mph) at Blackpool, Squires Gate (Lancashire) and 62Kt (71mph) at St Bees Head (Cumbria), with gusts of 40 to 50Kt (46 to 58mph) or higher elsewhere, particularly around exposed coastlines. A gust of 78Kt (90mph) was recorded at Great Dun Fell (Cumbria) – on the crest of the Pennines at 847masl.

Maximum Gust Speed 13 November 2023



Author: Mike Kendon, Met Office National Climate Information Centre

Last updated 17/11/2023