

Record-breaking maximum temperatures - 26/27 January 2003

Map of highest maximum temperatures - 26 January 2003

This map shows the data which were available from our network on 27 January 2003.

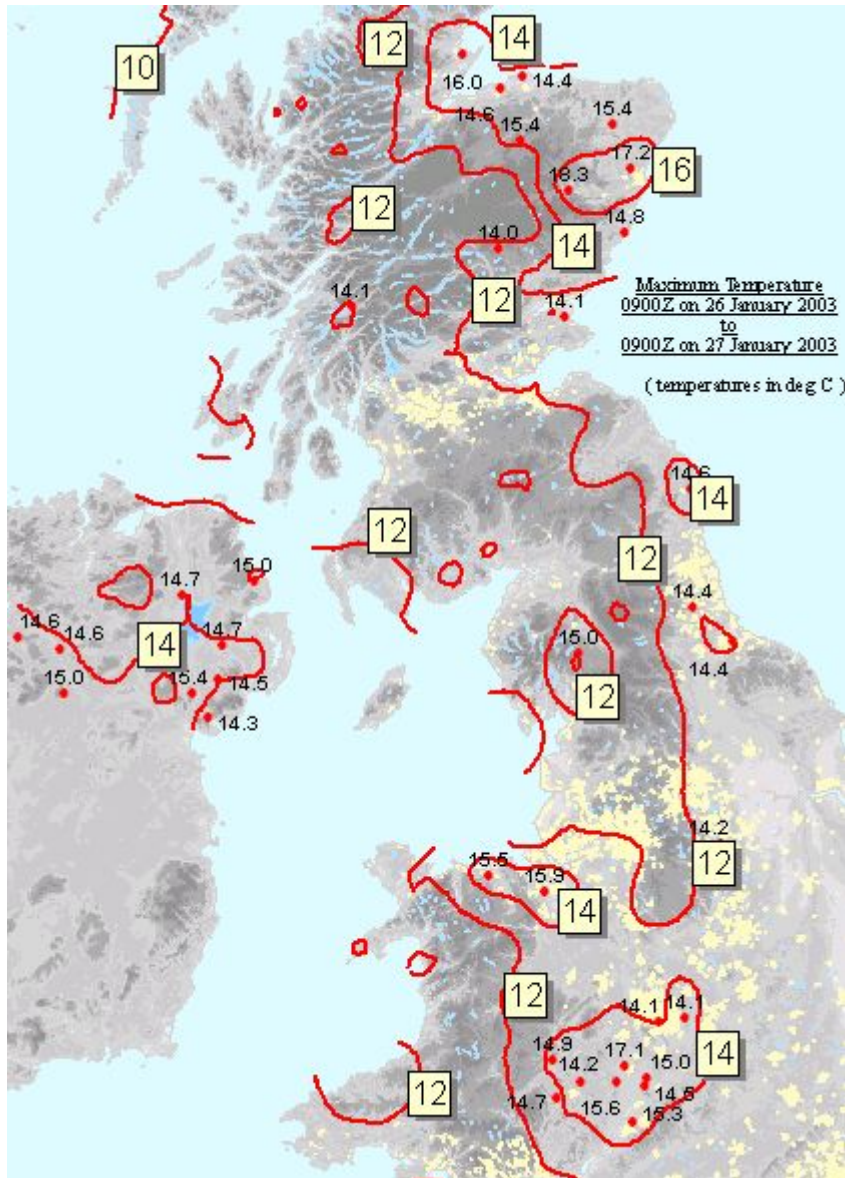


Table of highest maximum temperatures - 26 January 2003

The following table shows the data which were available from our network on the 27 January 2003.

The maximum temperature of 18.3 °C at Aboyne equals the previously highest maximum temperature for January any where in the UK, which was at Aber (Gwynedd) on both the 10 January 1971 and 27 January 1958.

Maximum Temperatures - 26 January 2003

Station	Max temp (°C)	Previous record
Aboyne (Aberdeenshire)	18.3	Highest January maximum temperature, previous highest 14.1 on 9/1/1998. Digital data records back to 1994.
Dyce (Aberdeenshire)	17.2	Highest January maximum temperature, previous highest 15.1 on 2/1/1992. Digital data records back to 1957.
Worcester, Barbourne (Worcestershire)	17.1	Highest January maximum temperature, previous highest 16.0 on 9/1/1998. Digital data records back to 1989.
Tain Range (Highland)	16.0	Highest January maximum temperature, previous highest 12.9 on 13/1/2002. Digital data records back to 1994.
Great Malvern (Worcestershire)	15.6	Highest January maximum temperature, previous highest 14.4 on 9/1/1998. Digital data records back to 1984.
Fyvie Castle (Aberdeenshire)	15.4	Highest January maximum temperature, previous highest 14.5 on 15/1/1989. Digital data records back to 1959.
Newry Carnbane (Co Down)	15.4	Highest January maximum temperature, previous highest 14.6 on 16/1/1993. Digital data records back to 1990.
Glenlivet (Moray)	15.4	Equal highest January maximum temperature, 15.4 also on 9/1/1979. Digital data records back to 1964.
Larne (Co Antrim)	15.0	Highest January maximum temperature, previous highest 14.6 on 9/1/1998. Digital data records back to 1962 (no digital data between 1976 and 1983).
Shap (Cumbria)	15.0	Highest January maximum temperature, previous highest 13.7 on 21/1/1996. Digital data records back to 1993.
Shobdon Airfield (Herefordshire)	14.9	Highest January maximum temperature, previous highest 14.1 on 5/1/1999. Digital data records back to 1993.
Inverbervie (Aberdeenshire)	14.8	Highest January maximum temperature, previous highest 11.8 on 13/1/1997. Digital data records back to 1993.
Hillsborough (Co Down)	14.7	Equal Highest January maximum temperature, 14.7 on 10/1/1980. Digital data records back to 1979.

Map of highest maximum temperatures - 27 January 2003

The following map shows the data which were available from our network on the 28 January 2003.

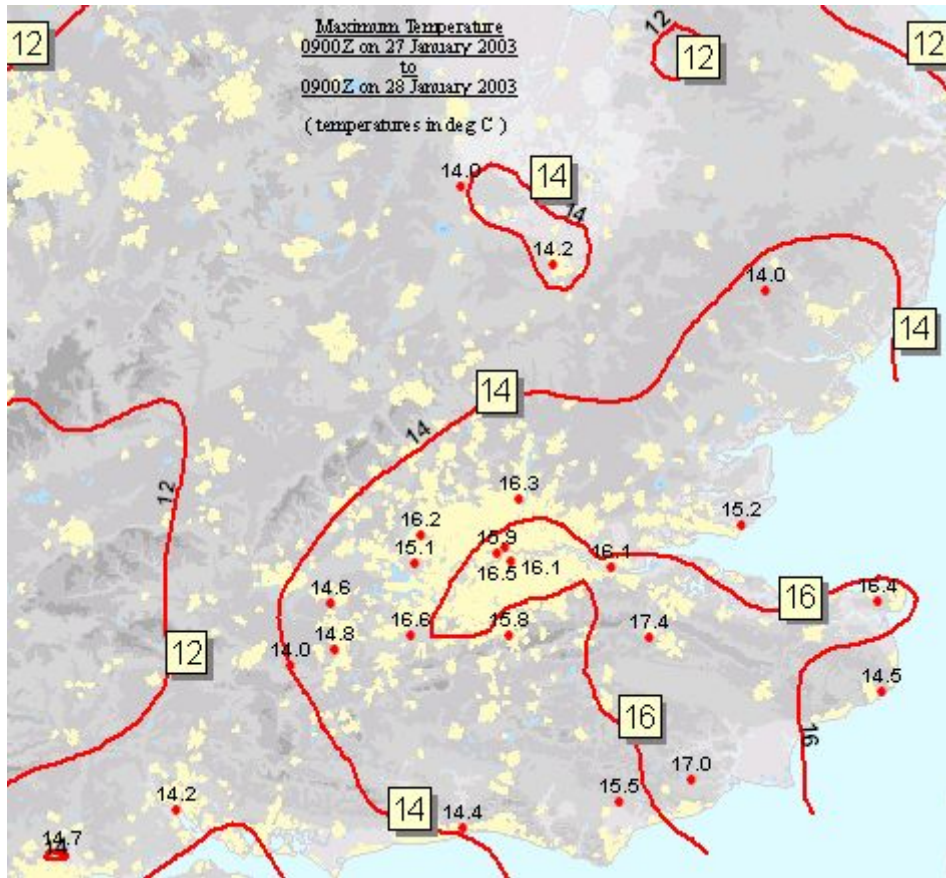


Table of highest maximum temperatures - 27 January 2003

The following table shows the data which were available from our network on the 28 January 2003.

The maximum temperature of 17.4 °C at East Malling is the highest recorded January maximum temperature in south-east England, previous highest recorded value being 16.3 °C at Gravesend-Broadness (Kent) on 6/1/1999.

MAXIMUM TEMPERATURES - 27 JANUARY 2003

Station	Max temp (°C)	Previous record
East Malling (Kent)	17.4	Highest January maximum temperature, previous highest 14.3 on 30/1/2002. Digital data records back to 1959.
Brede (East Sussex)	17.0	Highest January maximum temperature, previous highest 12.8 on 4/1/1999. Digital data records back to 1989.
Wisley (Surrey)	16.6	Highest January maximum temperature, previous highest 14.9 on 6/1/1999. Digital data records back to 1959.
Met Office London (Greater London)	16.5	Highest January maximum temperature, previous highest 15.7 on 6/1/1999. Digital data records back to 1975, although the site has changed location several times during this period.
Manston (Kent)	16.4	Highest January maximum temperature, previous highest 13.8 on 15/1/1975. Digital data records back to 1961.
Enfield (Greater London)	16.3	Highest January maximum temperature, but patchy digital records and has changed site several times since 1974.
Northolt (Greater London)	16.2	Highest January maximum temperature, previous highest 14.9 on 6/1/1999. Digital data records back to 1985.
Gravesend-Broadness (Greater London)	16.1	2nd highest January maximum temperature, previous highest 16.3 on 6/1/1999. Digital data records back to 1996.
St. James's Park (Greater London)	15.9	Highest January maximum temperature, highest being 14.7 on 6/1/1999. Digital data records back to 1957.
Kenley (Greater London)	15.8	Highest January maximum temperature, previous highest 13.2 on 6/1/1999. Digital data records back to 1992.
Herstmonceux (East Sussex)	15.5	Highest January maximum temperature, previous highest 13.9 on 9/1/1998. Digital data records back to 1993 (site change in 1992, previous site did not have any higher values than the new site, although it was a significant change in site location).
Shoeburyness, Landwick	15.2	Highest January maximum temperature, previous highest 14.3 on 4/1/1999. Digital data records back to 1984.
Heathrow (Greater London)	15.1	2nd highest January maximum temperature, highest being 15.4 on 6/1/1999. Digital data records back to 1949.
South Farnborough (Hampshire)	14.8	Highest January maximum temperature, previous highest 14.3 on 9/1/1998. Digital data records back to 1984.

Hurn (Dorset) 14.7 Highest January maximum temperature, previous highest 14.3 on 9/1/1998. Digital data records back to 1984.

Bracknell,
Beaufort Park 14.6 Highest January maximum temperature, previous highest 14.4 on 9/1/1998. Digital data records back to 1971.
(Berkshire)

Last updated: 11 February 2013

